

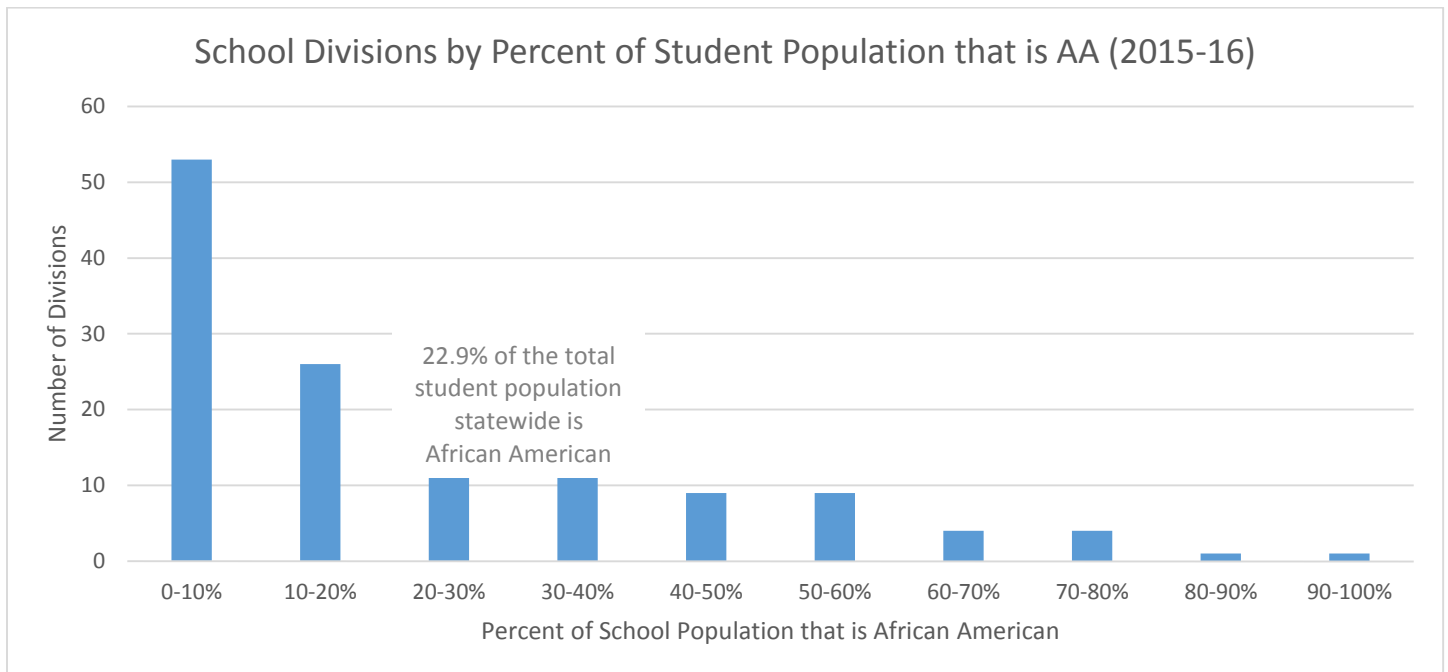
Racial Disparities in Virginia's Public Schools

I S S U E B R I E F

February 2016

Note: The data sources for this issue brief use the term “Black;” however, “African American” and “AA” are used below.

SEGREGATION



Source: www.doe.virginia.gov/statistics_reports/enrollment/fall_membership

Divisions in which at least 50% of students are African American (2015-16)

Division	% AA	Division	% AA	Division	% AA	Division	% AA
Petersburg	91.5	Portsmouth	71.2	Hampton	59.8	Suffolk	55.8
Franklin	80.7	Greensville	68.7	Surry	59.5	Lancaster	53.9
Sussex	75.9	Danville	68.1	Charles	57.7	Newport News	53.3
Richmond City	74.7	Martinsville	61.1	Hopewell	56.8	Essex	50.6
Brunswick	74.2	Norfolk	60.9	Prince Edward	56.7		

Source: www.doe.virginia.gov/statistics_reports/enrollment/fall_membership

Examples of racially isolated school divisions (2015-16)

Division	% AA	Division	% AA
Petersburg	91.5	Franklin	80.7
Richmond	74.7	Isle of Wight	27.8
Chesterfield	26.1	Southampton	41.6
Colonial Heights	16.6	Suffolk	55.8
Dinwiddie	34.6		
Henrico	36.4		
Prince George	31.4		

Source: www.doe.virginia.gov/statistics_reports/enrollment/fall_membership

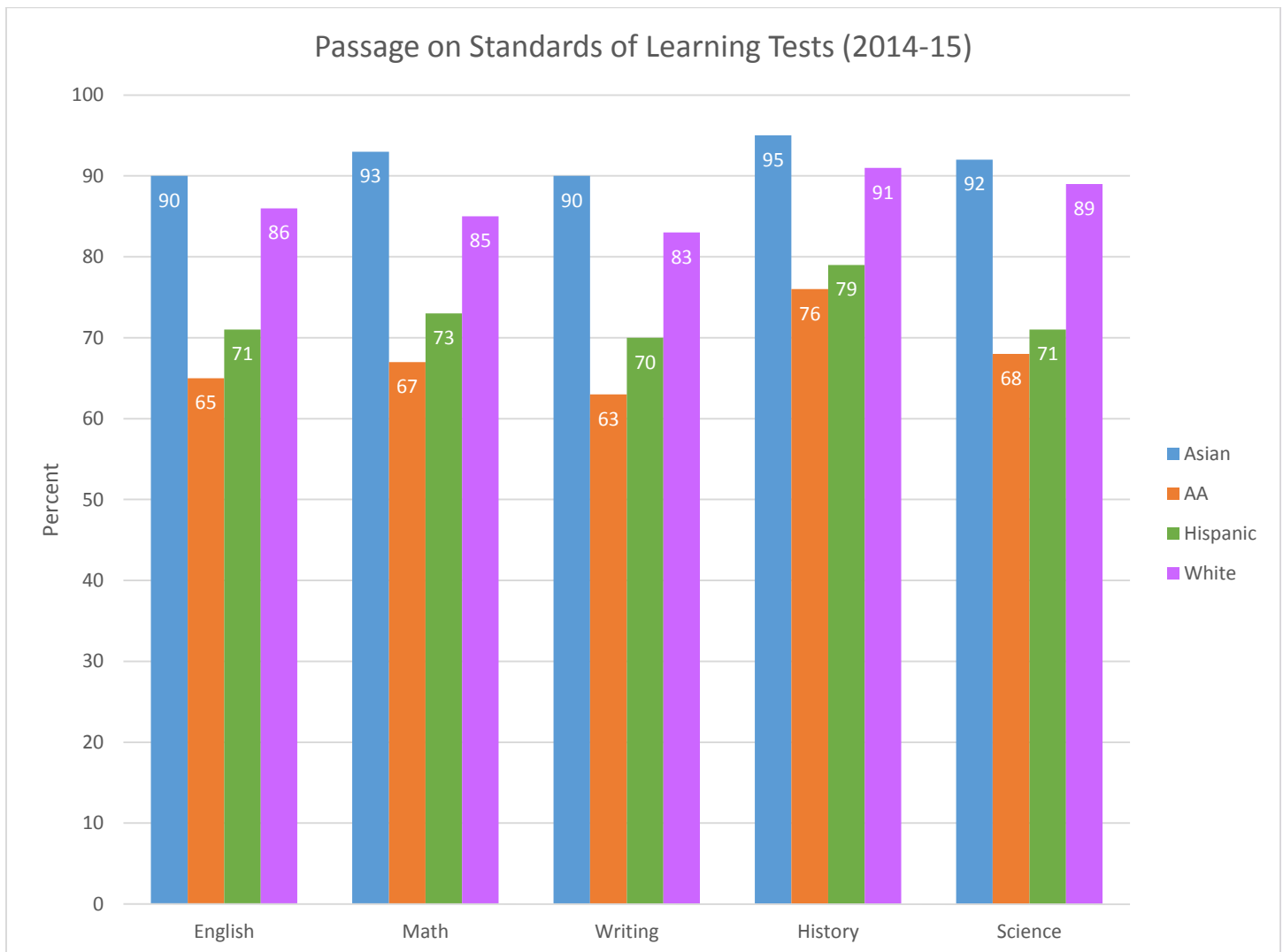
All schools denied accreditation (2015-16)

Division	School	% AA*	Division	School	% AA*
Alexandria	Jefferson-Houston Elementary	62.5	Norfolk	Lindenwood Elementary	86.5
Danville	Woodberry Hills Elementary	81.4	Norfolk	William H. Ruffner Middle	91.2
Essex	Essex High	47.6	Northampton	Kiptopeke Elementary	42.6
Hampton	A.W.E. Bassette Elementary	84.5	Petersburg	Peabody Middle	91.3
Hampton	Hunter B. Andrews	72.5	Portsmouth	Churchland Middle	71.8
Henrico	L. Douglas Wilder Middle	90.5	Richmond City	Amelia Street Special Education	81.4
Newport News	Mary Passage Middle	57.0	Richmond City	Martin Luther King Jr. Middle	96.5
Newport News	Newsome Park Elementary	84.0	Richmond City	Patrick Henry School	66.4
Newport News	Sedgefield Elementary	66.8	Richmond City	Richmond Alternative	96.9
Norfolk	Campostella Elementary	96.1	Staunton	Bessie Weller Elementary	21.3
Norfolk	Lake Taylor Middle	81.1			

* In 2015-16, 22.9% of the total student population in Virginia is African American.

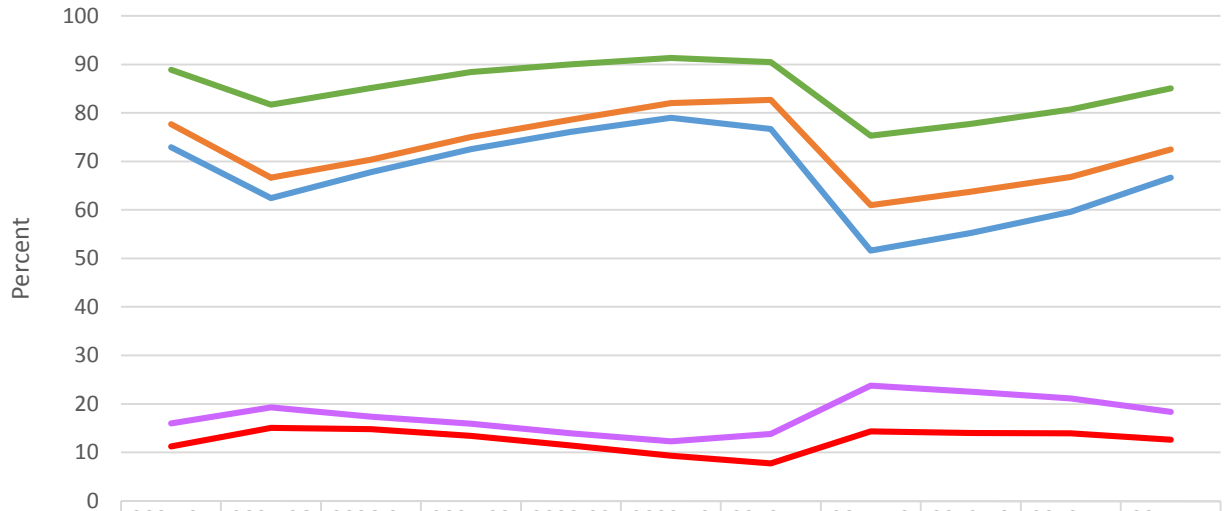
Sources: www.doe.virginia.gov/statistics_reports/accreditation_federal_reports
www.doe.virginia.gov/statistics_reports/enrollment/fall_membership

ACHIEVEMENT GAPS



Source: www.doe.virginia.gov/statistics_reports/school_report_card

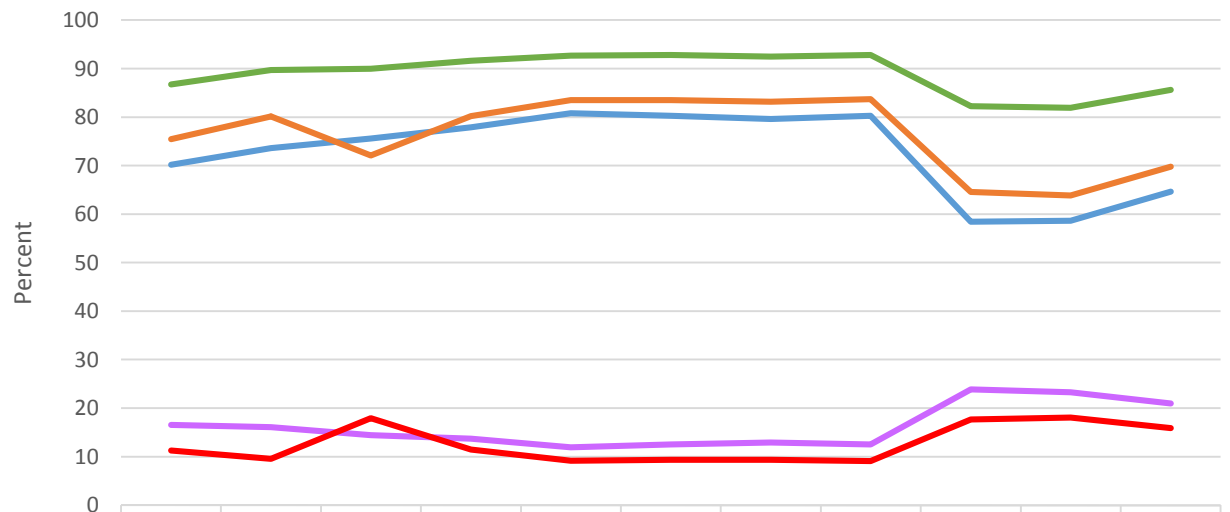
Passage on Mathematics Standards of Learning Test



	2004-05	2005-06	2006-07	2007-08	2008-09	2009-10	2010-11	2011-12	2012-13	2013-14	2014-15
AA	72.9	62.4	67.8	72.5	76.1	79.0	76.7	51.6	55.2	59.6	66.7
Hispanic	77.7	66.7	70.3	75.1	78.6	82.0	82.7	61.0	63.7	66.8	72.5
White	88.9	81.7	85.2	88.4	90.0	91.3	90.5	75.3	77.7	80.7	85.0
White-AA Gap	16.0	19.3	17.4	15.9	13.9	12.3	13.8	23.7	22.5	21.1	18.4
White-Hispanic Gap	11.2	15.0	14.8	13.4	11.4	9.3	7.7	14.3	14.0	13.9	12.6

* Gap numbers were calculated using the full passage rate, not the rounded numbers provided in the table for each subgroup.
 Source: <http://bi.virginia.gov/BuildATab/rdPage.aspx>

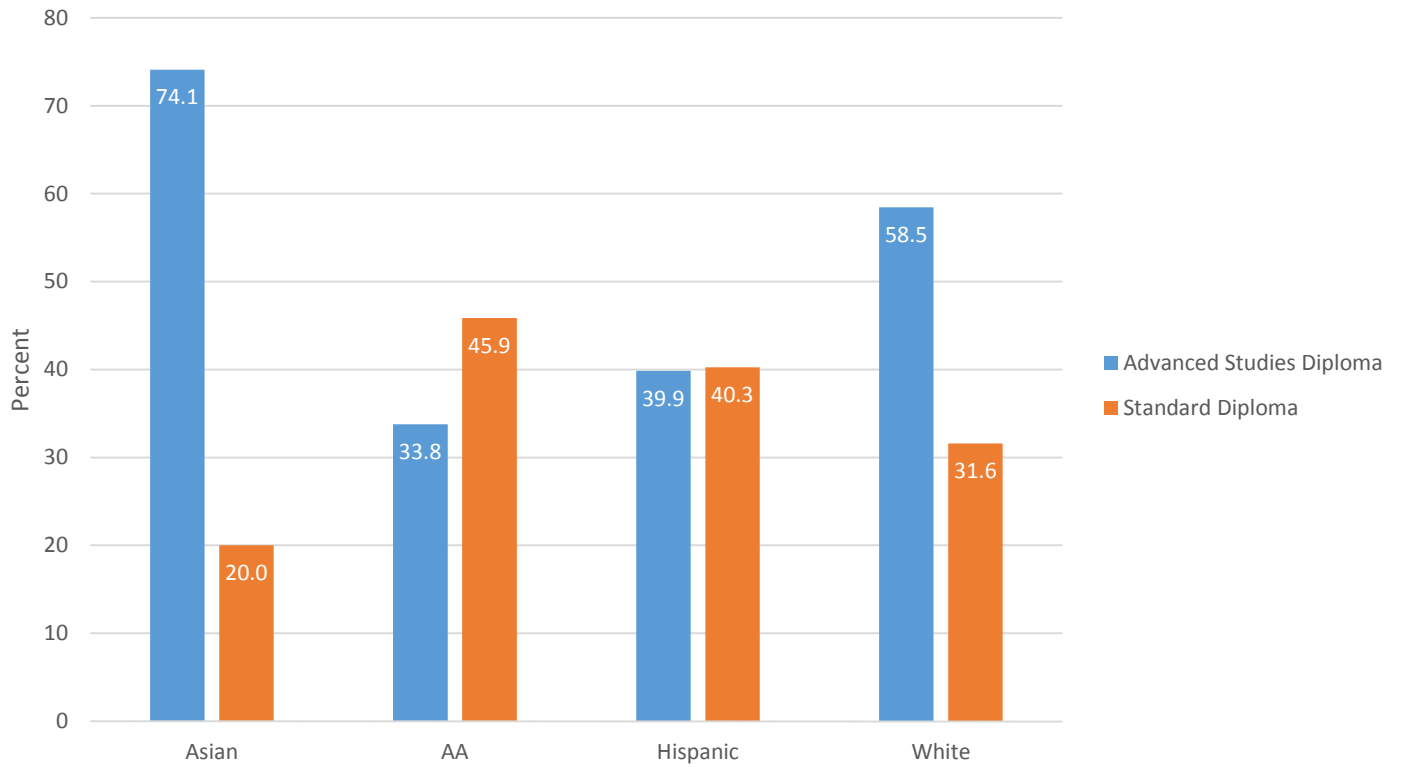
Passage on Reading Standards of Learning Test



	2004-05	2005-06	2006-07	2007-08	2008-09	2009-10	2010-11	2011-12	2012-13	2013-14	2014-15
AA	70.2	73.6	75.6	77.9	80.8	80.3	79.6	80.3	58.4	58.7	64.7
Hispanic	75.5	80.1	72.1	80.2	83.5	83.5	83.2	83.7	64.6	63.8	69.8
White	86.7	89.7	90.0	91.6	92.7	92.8	92.5	92.8	82.3	81.9	85.6
White-AA Gap	16.5	16.1	14.4	13.7	11.9	12.5	12.9	12.5	23.9	23.3	21.0
White-Hispanic Gap	11.2	9.6	17.9	11.5	9.2	9.3	9.3	9.1	17.7	18.1	15.9

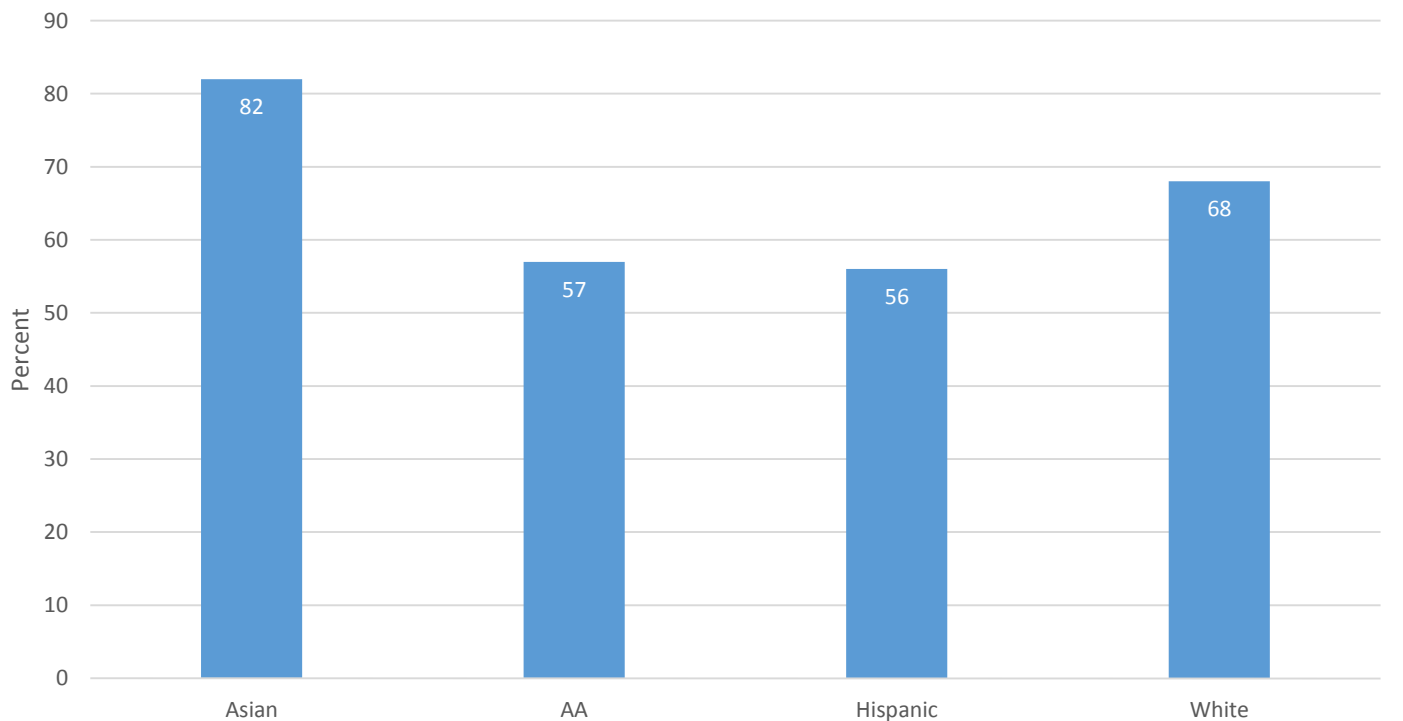
* Gap numbers were calculated using the full passage rate, not the rounded numbers provided in the table for each subgroup.
 Source: <http://bi.virginia.gov/BuildATab/rdPage.aspx>

On-Time Graduation with Advanced Studies or Standard Diploma (2015)



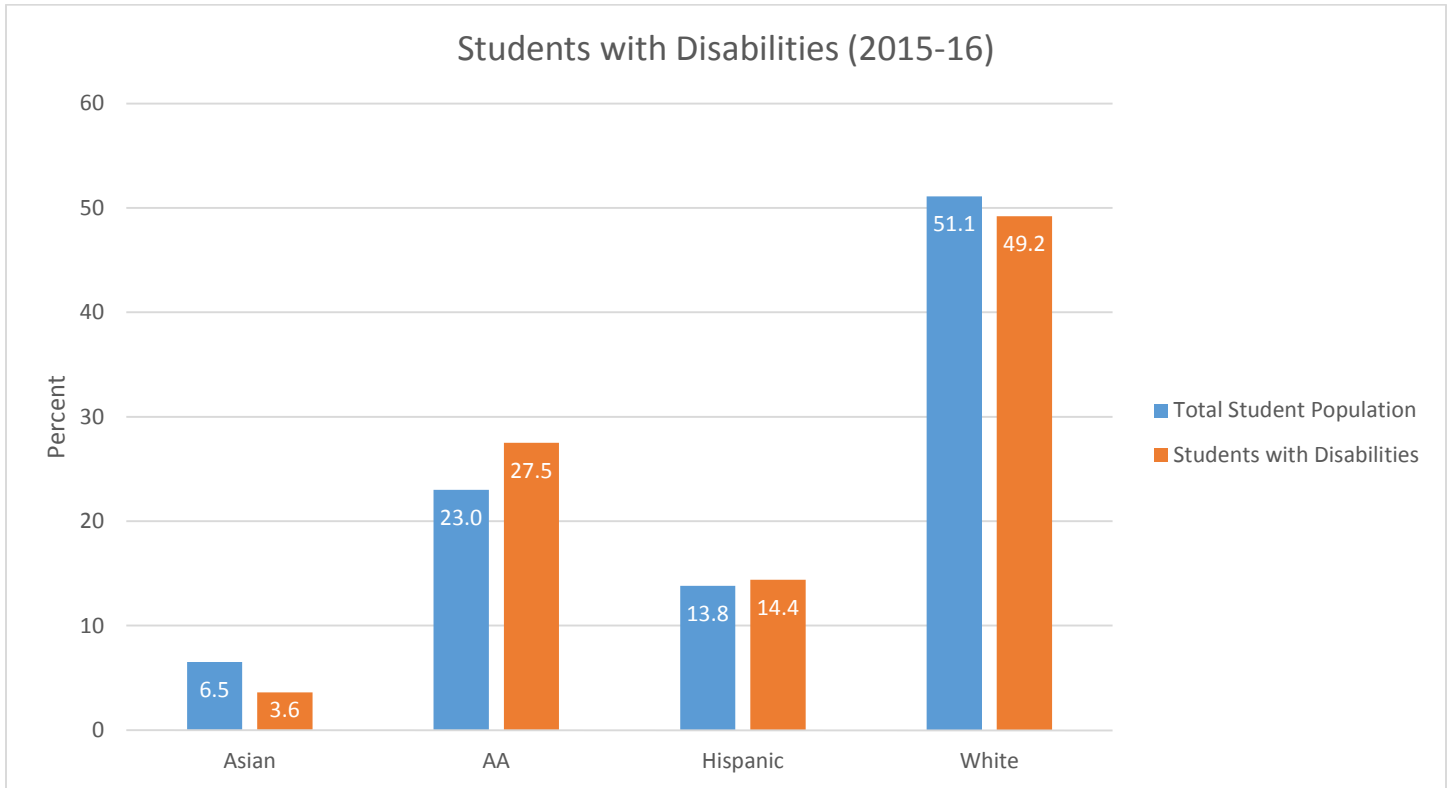
Source: www.doe.virginia.gov/statistics_reports/graduation_completion/cohort_reports

Students Who Enrolled in An Institution of Higher Education within 16 Months of Earning a Federally Recognized High School Diploma (2015)

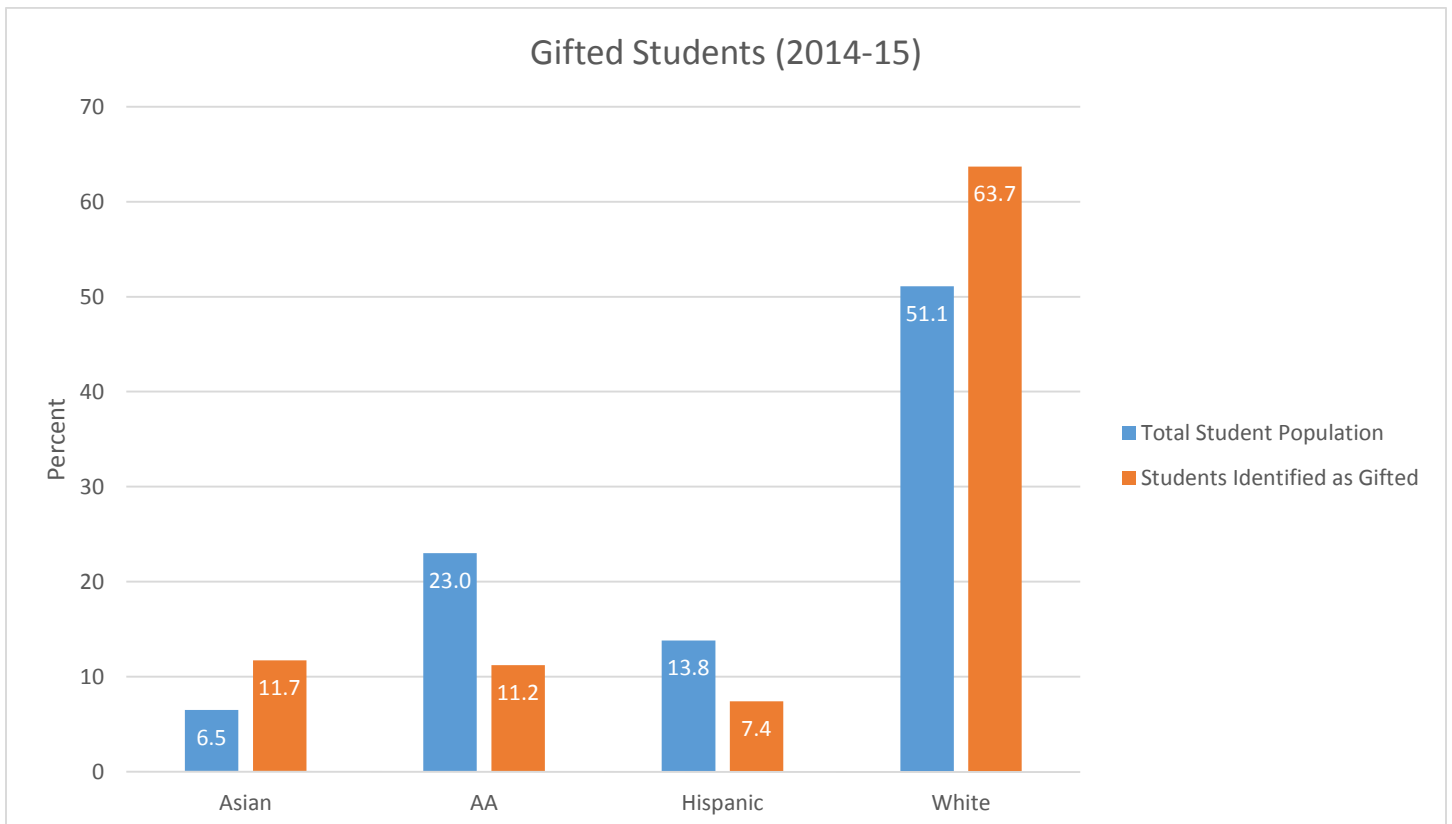


Source: https://p1pe.doe.virginia.gov/postsec_public/postsec.do?dowhat=LOAD_REPORT_C11

TRACKING

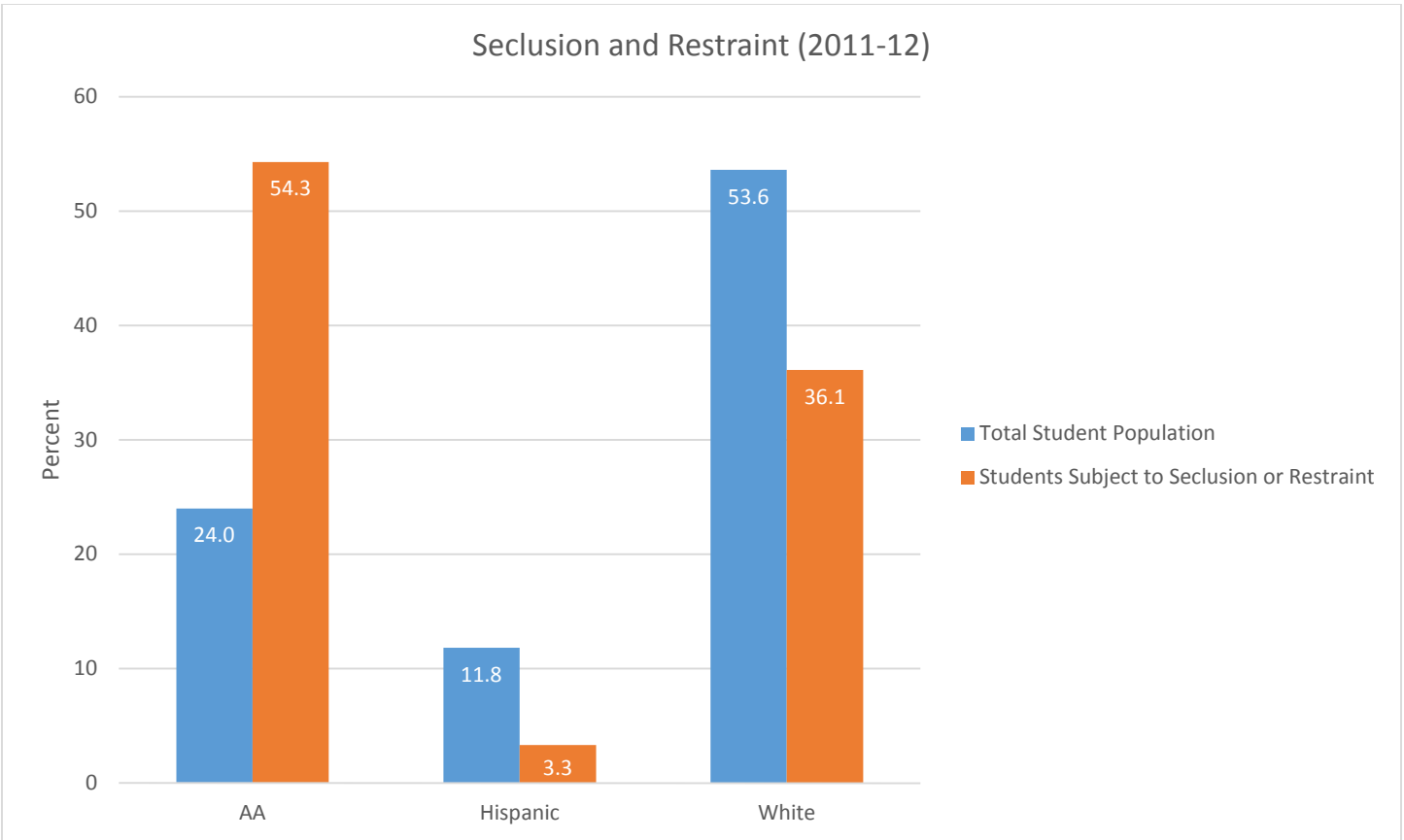


Sources: www.doe.virginia.gov/statistics_reports/enrollment



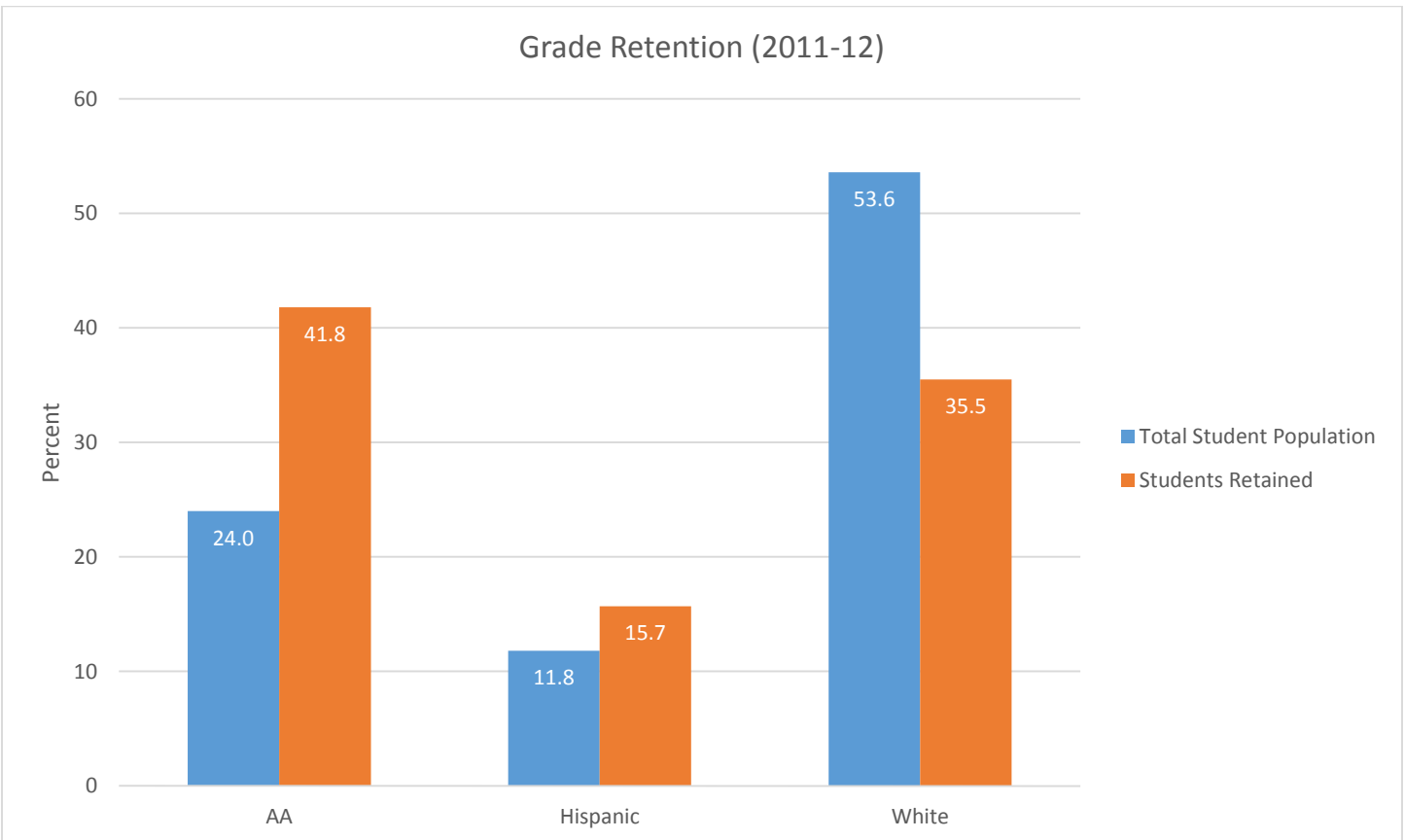
Source: www.doe.virginia.gov/statistics_reports/gifted

Seclusion and Restraint (2011-12)



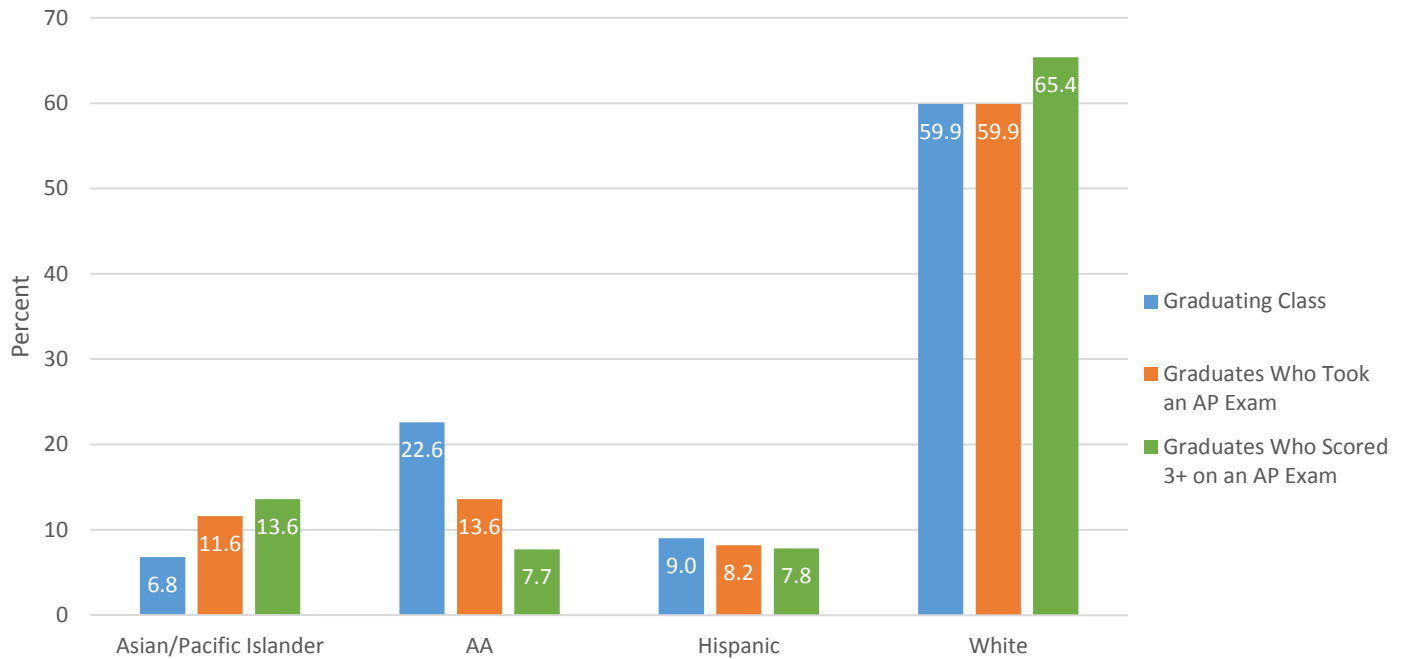
Source: <http://ocrdata.ed.gov>

Grade Retention (2011-12)



Source: <http://ocrdata.ed.gov>

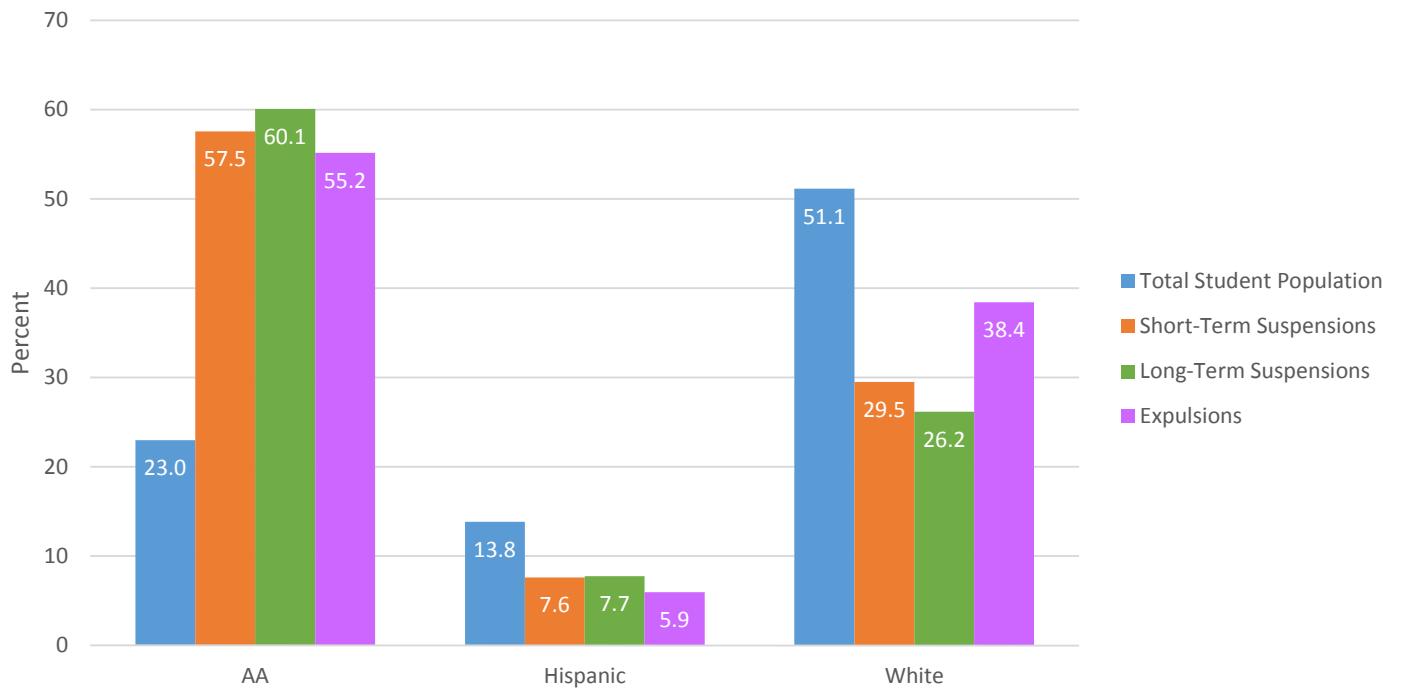
Advanced Placement (AP) Participation and Passage Rates (2013)



Source: <http://media.collegeboard.com/digitalServices/pdf/ap/rtn/10th-annual/10th-annual-ap-report-state-supplement-virginia.pdf>

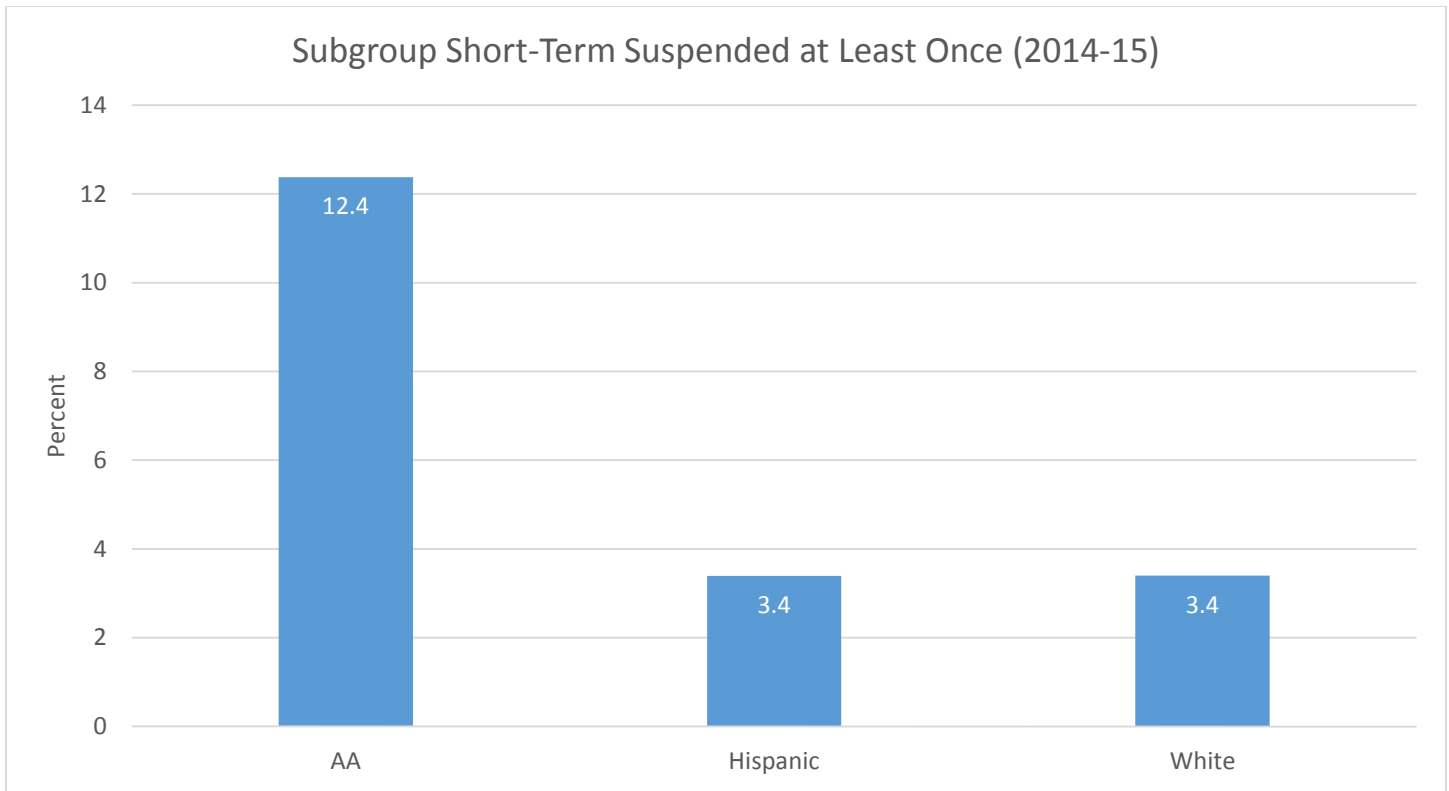
SCHOOL DISCIPLINE

Suspensions & Expulsions Issued (2014-15)



Sources: www.doe.virginia.gov/statistics_reports/enrollment
Public records provided by the Virginia Department of Education

Subgroup Short-Term Suspended at Least Once (2014-15)



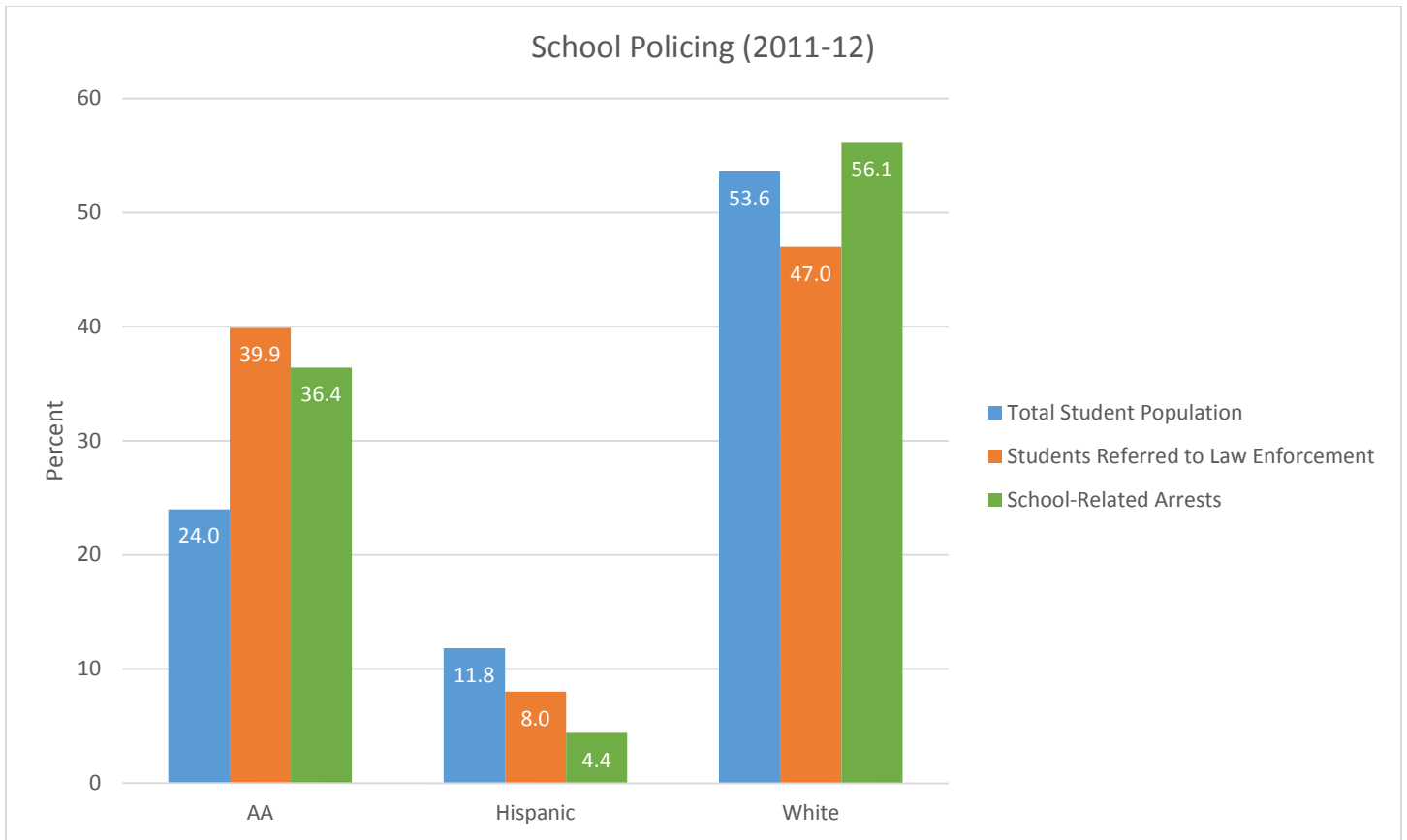
Sources: www.doe.virginia.gov/statistics_reports/enrollment
Public records provided by the Virginia Department of Education

Divisions in the top 15 in short-term suspension rates each of the past five school years

Division	% of All Students Short-Term Suspended at Least Once					AA Students as % of Student Population
	2010-11	2011-12	2012-13	2013-14	2014-15	2014-15
Brunswick	14.50	19.06	17.86	19.94	22.51	75.6
Danville	20.51	19.70	20.75	17.69	18.26	67.8
Petersburg	19.63	22.32	21.88	21.09	20.17	92.2
Richmond City	17.19	14.69	14.59	16.27	13.37	76.1
Southampton	15.03	16.77	15.99	14.43	13.79	40.8
Surry	17.09	15.73	14.30	13.81	13.49	59.6
Sussex	14.24	23.24	24.85	17.45	15.41	75.4

By comparison, statewide in 2014-15, 5.4% of students were short-term suspended at least once, and 23.0% of the student population was African American.

Sources: <https://p1pe.doe.virginia.gov/pti/>
www.doe.virginia.gov/statistics_reports/enrollment



Source: <http://ocrdata.ed.gov>

JustChildren

LEGAL AID
JUSTICE CENTER

Jason Langberg is the attorney responsible for this material.
 123 E. Broad St., Richmond, VA 23218 • (804) 521-7304 • jason@justice4all.org
www.justice4all.org